

产品说明

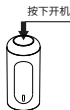
使用产品前请仔细阅读本说明书,并妥善保管。



分光色宝 使用说明书

快速使用指南

1. 开机



2. 仪器如何连接APP



①. 仪器开机,
手机打开蓝牙



②. 在APP端点击
“连接”开始搜索
仪器序列号

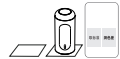


③. 找到仪器校准盒
内部序列号并点击
APP界面的“连接”

3. 如何测量色差

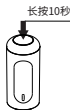


①. 仪器与APP连接成功后,仪器放到
标样上,点击APP中的“取标准”



②. 仪器放到试样上,点击APP中的
“测色差”,即可完成色差测量

4. 关机



基本参数

产品名称:	CR10
测量结构:	45/0
测试指标:	RGB,Hex,Lab,LCh,HSB, LRV,CMYK(A,T,E,M),XYZ,Yxy, ΔE^*ab , ΔE^*cmc , ΔE^*94 , ΔE^*00
照明光源:	LED(全波段均衡LED光源)
测量口径:	4mm
波长间隔:	10nm
波长范围:	400nm-700nm
短期重复性 [※] :	$\Delta E^*00 \leq 0.1$
台间差 ^{※※} :	$\Delta E^*00 < 0.5$
测量精度:	0.1
测量时间:	1.0s
接口:	USB, 蓝牙
光源条件:	A,B,C,D50,D55,D65,D75,F1,F2,F3, F4,F5,F6,F7,F8,F9,F10,F11,F12, CWF,U30,U35,DLF,NBF,TL83,TL84
视场角:	2°, 10°
屏幕:	无屏幕
电池容量:	单次充满电可连续测量5000次
语言:	中文, 英语
校准:	自动校准
软件支持:	Andriod,IOS,微信小程序,Windows
重量:	约75g
体积:	直径:33mm, 高度:84mm
存储:	APP海量存储

※ 每间隔5s测量白板30次

※※ BCRA II 系列12块色砖测量平均值

*参数如有修改,恕不另行通知

保修说明

本产品售后服务严格依据《中华人民共和国消费者权益保护法》《中华人民共和国产品质量法》实行售后三包服务,服务内容如下:

- 1、自您签收日起7日内,本产品出现《产品性能故障表》所列性能故障的情况,经由本公司售后服务中心检测确定,可免费享受退货或换货服务;
- 2、自您签收日起8-15日内,本产品出现《产品性能故障表》所列性能故障的情况,经由本公司售后服务中心检测确定,可免费享受换货或维修服务;
- 3、自您签收日起12个月内,本产品出现《产品性能故障表》所列性能故障的情况,经由本公司售后服务中心检测确定,可免费享受维修服务。

提示信息

因运输过程中需用包装箱保证产品运输安全,建议自签收日起至至少保留包装箱30天。

非保修条例

- 1、未经授权维修、误用、碰撞、疏忽、滥用、进液、事故、改动、使用非本产品配件或撕毁涂改标签防伪标记;
- 2、已超过三包有效期;
- 3、因不可抗力造成的破坏;
- 4、不符合《产品性能故障表》所列性能故障的情况;
- 5、因人为原因导致非本产品及其配件产生《产品性能故障表》所列性能故障。

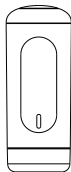
警告

- 请勿尝试拆卸或更换仪器内部零件如需服务请联系代理商或官方客服。
- 请勿将仪器放置于热源或直接暴露在炉火旁。
- 若任何液体不小心进入仪器,请立即关闭仪器电源。
- 本产品及内部零件如被儿童误食可能导致窒息等危险。

性能故障表

名称	性能故障
分光色宝	1、电源指示灯不亮(电池没电除外); 2、仪器开关卡滞,不能正常开/关; 3、仪器显示器无法正常显示; 4、测量光源不亮;

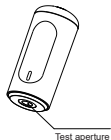
合格证
已验证



ColoriMeter Operation Instruction

Product introduction

Please read this manual carefully before using the product.



Test aperture



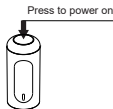
Calibration Cover

Test button

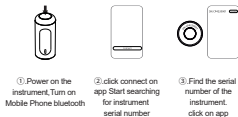


Quick guide

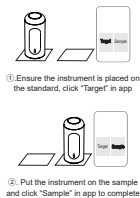
1.Power on



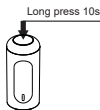
2.How does the instrument connect to the app



3.How to measure color difference



4.Turn on



Parameters

Product name: CR10
Geometry and Angle: 45/0
Color Value: RGB,Hex,Lab,LCh,HSB,
LRV,CMYK(A,T,E,M),XYZ,Yxy,
 $\Delta E^*ab, \Delta E^*cmc, \Delta E^*94, \Delta E^*00$

Lighting condition:

LED(Full Scale Visible Wavelength Range)

Aperture: 4mm
Wavelength Interval: 10nm
Wavelength Range: 400nm-700nm
Observer Angle[※]: $\Delta E^*00 \leq 0.1$
Inter-instrument agreement^{※ ※}: $\Delta E^*00 < 0.5$
Display Resolution: 0.1
Measurement Time: 1.0s

Interface: USB, Bluetooth
Light source: A,B,C,D50,D55,D65,D75,F1,F2,F3,
F4,F5,F6,F7,F8,F9,F10,F11,F12,
CWF,U30,U35,DLF,NBF,TL83,TL84
Angle of field: 2°, 10°
Screen: No screen
Battery: 5,000 continuous test per-charge
Language: Chinese, English
Calibration: Automatic calibration
Software support:

Android,IOS,Wechat applet,Windows

Weight: About 75g
Volume: Diameter:33mm, Height:84mm
Storage: App mass storage

※Measure white tile 30 times at 5-seconds interval
※※BCRA Series II ,average measurement of 12 tiles

*Parameters are subject to change without notice

Warranty instructions

Reminder

It is recommended that keep the packing box for at least 30 days as the packing box is required to ensure the safety of transportation.

Non warranty regulations

- 1、Unauthorized repair, misuse, accident, modification, use of non official accessories.
- 2、Instrument is out of warranty.
- 3、Damage caused by force.
- 4、Not the performance failure listed in the product performance failure table.
- 5、Performance failure caused by human factors.

Warning

- Do not attempt to disassemble or replace any part of the equipment. Please contact the agent or official customer service for after sales service.
- Do not place the equipment near heat source or directly expose to the fire.
- If any liquid enters the equipment, please power off the equipment immediately.
- This product contains small parts. It may cause suffocation and other hazards, if swallowed by children.

Product performance failure table

Name	Performance failure
ColoriMeter	1.The equipment can't power on 2. The equipment's button can't work normally. 3.Equipment screen fails to work normally. 4. Equipment lightsource fails to work normally.

Qualified
Tested